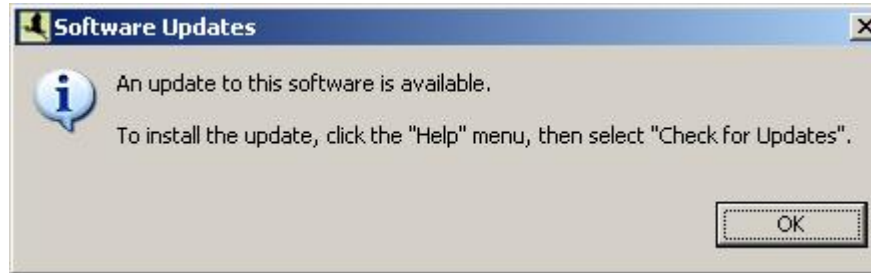


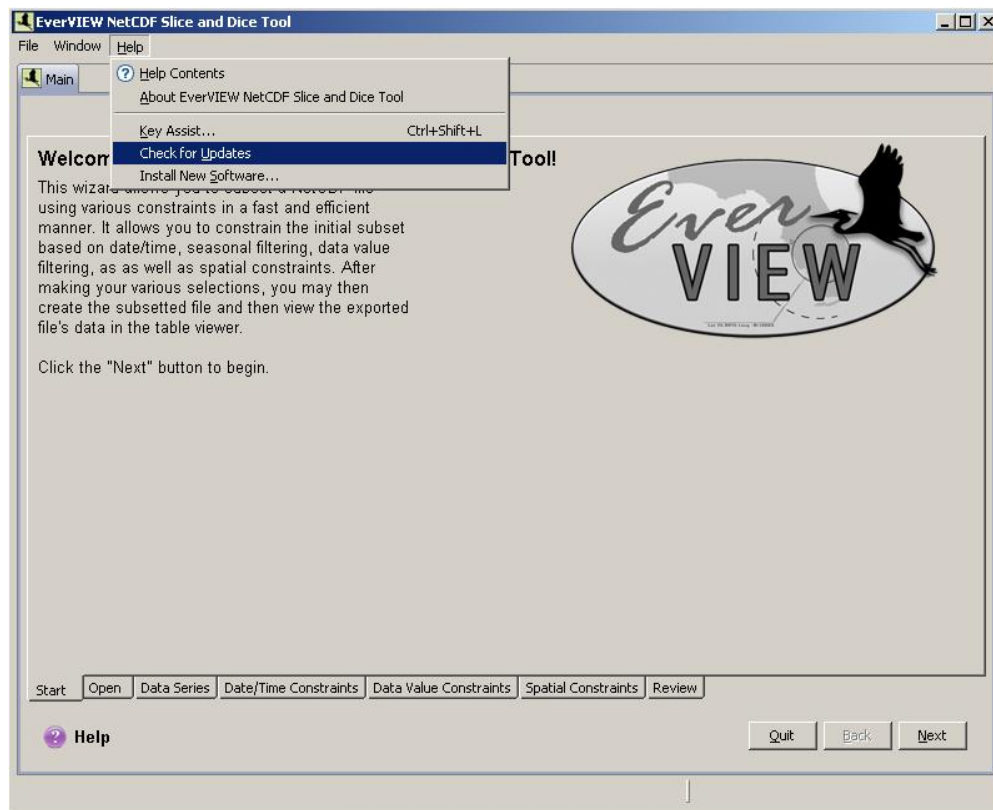
EverVIEW Slice and Dice Update Process

If a user has an older version of the EverVIEW Slice and Dice application and a new version of the application has been released, the application will notify the user of available updates at startup. The user can apply these updates by clicking on “Check for Updates” in the “Help” menu. The rest of this document explains the step by step process for applying these updates.

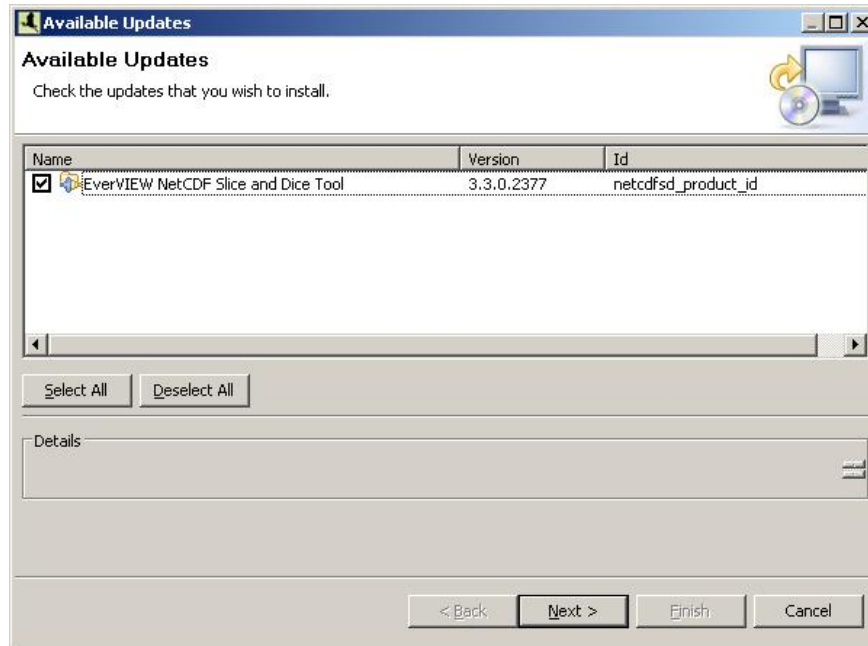
- Upon startup, the application will display the following dialog box notifying the user that an update is available.



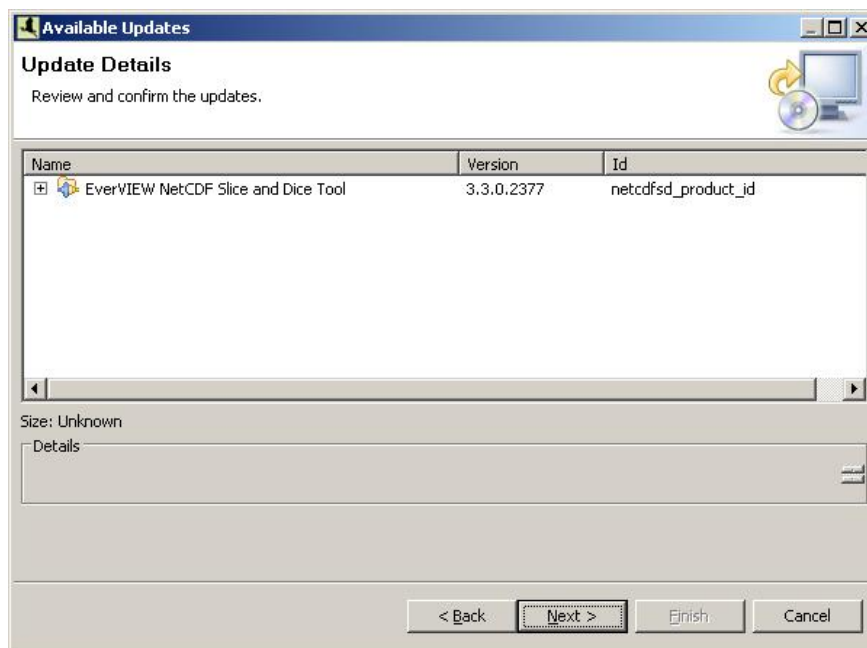
- Click on “Check for Updates” under the help menu, to install the new update.



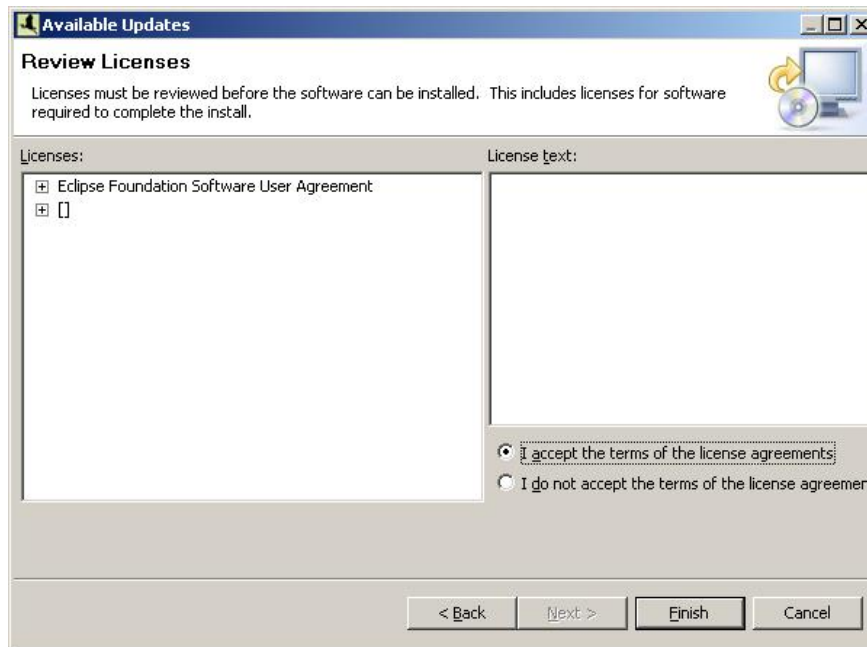
- Select the update(s) to be applied. It is recommended to select all updates by clicking on 'Select All'.



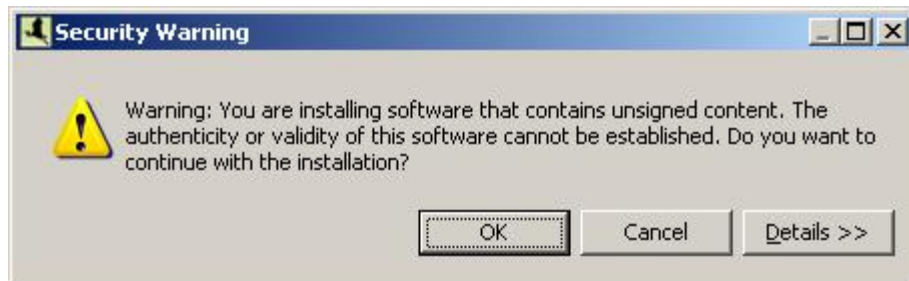
- Confirm the update(s) by clicking on 'Next'.



- Accept the license and click 'Finish'.



- The update process might give a security warning about 'unsigned contents'. Click 'OK' to continue.



- Upon applying the updates, the application may require a restart. It is recommended to restart the application for updates to be applied.

